

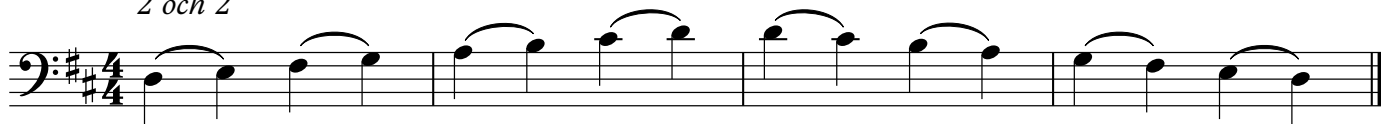


# Nivå 2

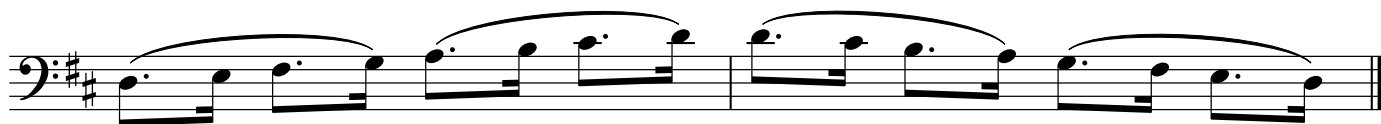
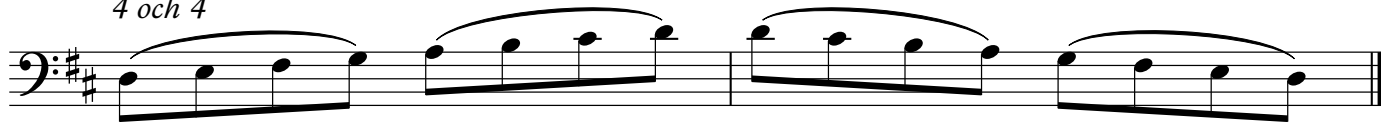
hösten 2018

# Legato

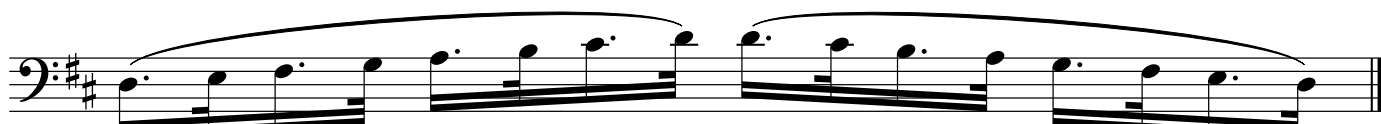
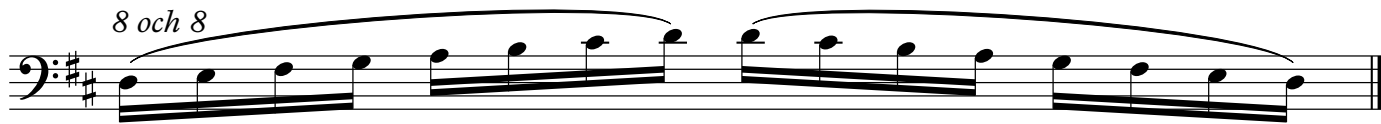
2 och 2



4 och 4



8 och 8



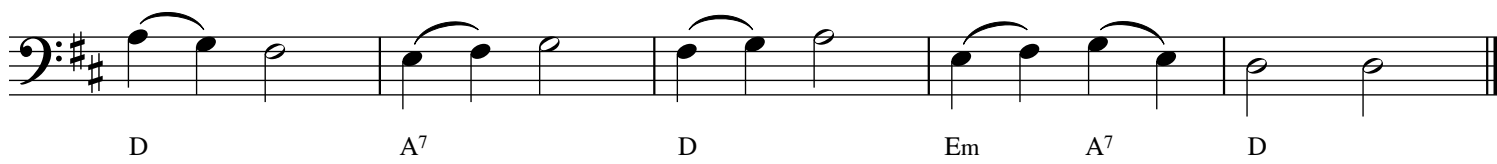
Tonkontroll - en stråk på varje ton



# Krukmakaren

*nivå 2 - legato*

L. Jöneteg



# Middagslur

*Legato*

1. Jöneteg

D Bm G A<sup>7</sup>

D Bm G A<sup>7</sup> D *fine*

D A<sup>7</sup>

D G A<sup>7</sup> D *D.C. al fine*

## Stråkarter nivå 2

*Martellato - bestämda stråk*

Öva "Studsollen"

*pizz arco pizz arco*

*Stråk åt samma håll*

Öva "Happy farmer"

Öva "Happy farmer"

*Spiccato*

Öva "Jakten"

# Studsbollen

Nivå 2 - Martellato - grepp 2

L. Jöneteg

Musical score for "Studsbollen" in bass clef, 4/4 time. The piece features a martellato effect and chord changes. The score consists of four staves of music. The first staff has a 4-measure phrase with chords Am, E7, and Am. The second staff has a 4-measure phrase with chords Am, E7, Am, E7, and Am. The third staff has a 4-measure phrase with chords Am, E7, Am, and E7. The fourth staff has a 4-measure phrase with chords Am, E7, Am, and E7.

# The Happy Farmer

stråk åt samma håll -  
grepp 2 på d och a, grepp 1 på g

R. Schumann

Musical score for "The Happy Farmer" in bass clef, common time. The piece features a stråk effect and a fine ending. The score consists of five staves of music. The first staff has a 4-measure phrase with a stråk effect. The second staff has a 4-measure phrase with a stråk effect. The third staff has a 4-measure phrase with a stråk effect. The fourth staff has a 4-measure phrase with a stråk effect. The fifth staff has a 4-measure phrase with a stråk effect and a fine ending.

# Jakten

*Spiccato - hoppande stråk  
grepp 1*

L. Jöneteg

*liggande*

D D/C# D/B D/A G A D

D D/C# D/B D/A G A D

D A<sup>7</sup> D A<sup>7</sup>

D D/C# D/B D/A G A D

D A<sup>7</sup> D A<sup>7</sup>

D D/C# D/B D/A G A D

# Segeltur

*4:e läget*

L. Jöneteg

1 3 4 1 3 4 1 3 4 3

G Am D<sup>7</sup> G G<sup>7</sup>

3 1 4 3 1

C G Em Am D<sup>7</sup> G

# Tröskan går

3:e läget - grepp 1

1 3 0 1 3 1  
C G7 C C7  
0 1  
F C Dm G7 C

# Berg och dal

3:e läget - grepp 3

1 -2  
D A7 D Em A7 D D7  
1 1 4  
G A7 D Em/G A7 D

# Vaggvisa

4:e läget - grepp 1

L.- Jöneteg

1 4  
Em Am B7 Em  
1 3 1 4 3  
D7 G B7  
1 4  
Em Am B7 Em

# Ruskvals

Lägeväxling 1:a till 3:e läget

L. Jöneteg

Bass line for Ruskvals in 3/4 time. The key signature has one flat (Bb). The piece is in 3/4 time. The bass line consists of three staves. The first staff starts with a square symbol (□) and ends with a -1 fingering. The second staff has fingerings 1 and 4. The third staff has fingerings 1 and 4. Chords are indicated below the notes: F, Bb, F, Bb, F, C7, F, C7, F, F7, Bb, F, C7, F.

# Jag vet en dejlig rosa

1:a, 2:a och 3:e läget

Bass line for Jag vet en dejlig rosa in 2/4 time. The key signature has two flats (Bb, Eb). The piece is in 2/4 time. The bass line consists of four staves. The first staff has a V (vibrato) marking and a -1 fingering. The second staff has fingerings 1, 3, 4, 4, 1, 2. The third staff has fingerings 1, 3, 4, 4, 1, 2. The fourth staff has fingerings 1, 4, 1, 4, 2. Chords are indicated below the notes: Gm, D, Gm, Cm7, D, Gm, Gm, D, Gm, Cm7, D7, Gm, G7, Cm, D7, Gm, Cm7, D7, Gm.

# Meditation

Vibrato - 3:e och 4:e läget

L. Jöneteg

Sheet music for 'Meditation' in 4/4 time, featuring vibrato on the 3rd and 4th frets. The piece is in the key of D minor (one flat). The notation consists of four staves of bass guitar. Fingerings are indicated by numbers 1-4 above notes. Red notes are on the 3rd fret, and blue notes are on the 4th fret. Chords are indicated below the staff.

Staff 1: Dm (1), Gm<sup>7</sup> (4), A<sup>7</sup> (3), Dm (1), Gm<sup>6</sup> (1), A<sup>7</sup> (4), Dm (2), A<sup>7</sup> (1)

Staff 2: Dm, Gm<sup>7</sup>, A<sup>7</sup>, Dm, Gm (4), Dm (2), A<sup>7</sup> (1), Dm (1)

Staff 3: Dm, B<sup>b</sup>, Gm, A<sup>7</sup> (3), Dm, Gm, A<sup>7</sup> (3)

Staff 4: Dm, Gm<sup>7</sup>, A<sup>7</sup>, Dm, Gm (4), Dm (2), A<sup>7</sup> (1), Dm (1)

# Höstvisa

dubbelgrepp

L. Jöneteg

Sheet music for 'Höstvisa' in 4/4 time, featuring double fretting. The piece is in the key of D major (two sharps). The notation consists of four staves of bass guitar. Fingerings are indicated by numbers 1-4 above notes. Chords are indicated below the staff. The piece ends with 'fine' and 'D.C. al fine'.

Staff 1: G, D<sup>7</sup>, G, D<sup>7</sup>

Staff 2: G, D<sup>7</sup>, G, D<sup>7</sup>, G, *fine*

Staff 3: C, G, C, G

Staff 4: C, G, D<sup>7</sup>, G, *D.C. al fine*



# The Bridal - Jig

§ V G Am G

D G Am G D G *fine*

Em D G D Em

D G D Em *D.S. al fine*

§

*fine*

*D.S. al fine*