



VÅREN 2018

CELLO

Låtar att kunna utantill:

Blues

Spanien (på alla strängar)

Petronella (på A och D)

Blinka lila stjärna (på A och D)

De fyra greppen

Grepp 1



Grepp 2



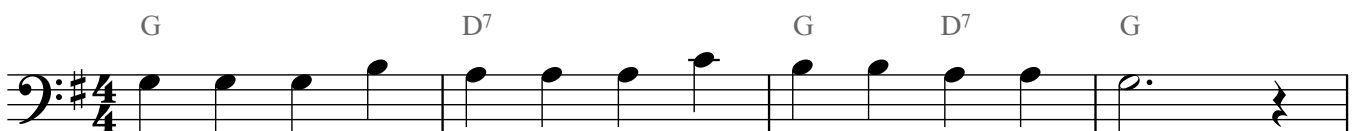
Grepp 3



Grepp 4



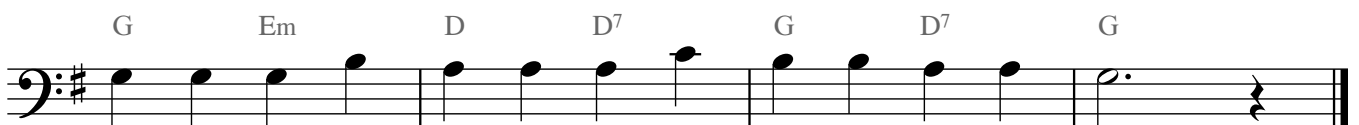
Björnen sover



Bjö - rnen sov - er, Bjö - rnen sov - er, i sitt lung - a bo.



Han är in - te far - lig, ba - ra man är var - lig.



Men man kan dock, men man kan dock, hon - om ald - rig tro.

Imse vimse spindel

Grepp 3

Bass guitar notation for the song "Imse vimse spindel" in the key of D major (two sharps). The piece is in 3/4 time and consists of two lines of music. The first line has four measures with fingerings 1, -2 -4, -2 -2 -4 1, -4 0, and -4 -4. The second line has four measures with fingerings 1, -4, -2, 1, 1, -2 -4, -2, -4 1. Chords are indicated below the notes: E, A, B7, E, E, A, B7, E, C#, G#, A, E, E, E, B7, E.

Vart ska du gå?

A. Tegnér

Grepp 4

Bass guitar notation for the song "Vart ska du gå?" in the key of B minor (two flats). The piece is in 4/4 time and consists of four lines of music. The first two lines have four measures each with fingerings 0, -1 2, -1, 2 4, and -1, -1 2, -1, 2 4, and -1. The last two lines have four measures each with fingerings -1 0 4 0 -1, 2 -1 0 -1 2, -1 0 4 -1, 4 2, and -1 0 4 0 -1, 2 -1 0 -1 2, -1 0 4 0, 4 2. Chords are indicated below the notes: B, Eb, Bb, F7, Bb, B, Eb, Bb, F7, B, Eb, B, F7, B.

Oh, Susanna

Musical score for "Oh, Susanna" in bass clef, 4/4 time, key of D major. The score consists of four staves of music. The chords indicated are: D, A⁷, D, D⁷, G, D, A⁷, D, A⁷, D.

Hammocken

grepp 1

L Jöneteg

Musical score for "Hammocken" in bass clef, 4/4 time, key of D major. The score consists of four staves of music. The chords indicated are: D, A⁷, D, G, D, A⁷, D, D, G, D, E⁷, A⁷, D, D, D⁷, G, D, G, D, A⁷, D. The score ends with the instruction "D.C.al fine".

Mollvisa

grepp 2

L. Jöneteg

Musical notation for the piece 'Mollvisa grepp 2' in bass clef, 4/4 time. The key signature has two flats (Bb and Eb). The notation consists of four staves of music with corresponding chords written below:

- Staff 1: Gm, D7, Gm, D7, Gm, D7
- Staff 2: Gm, D7, Gm, D7, Gm
- Staff 3: Eb, F7, B, D7, Eb, F7, B, D7
- Staff 4: Gm, D7, Gm, D7, Gm

Halva stråk på D dur skala:

- 1) från frosch till mitt 2) från mitt till spets

Musical notation for half strokes on the D major scale in bass clef. The key signature has two sharps (F# and C#). The notes are: D, E, F#, G, A, B, C#, D.

Hela stråk på D dur skala:

Musical notation for full strokes on the D major scale in bass clef. The key signature has two sharps (F# and C#). The notes are: D, E, F#, G, A, B, C#, D.

Ett helt och 2 halva stråk på D dur skala

Musical notation for one full stroke and two half strokes on the D major scale in bass clef. The key signature has two sharps (F# and C#). The notes are: D, E, F#, G, A, B, C#, D.